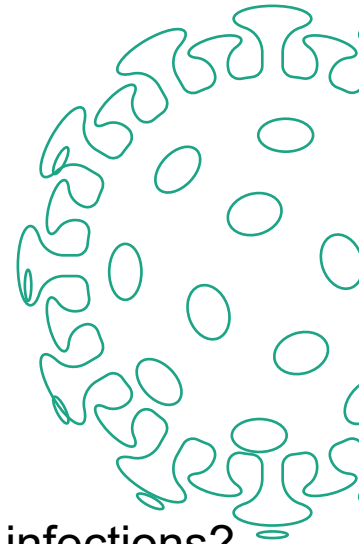
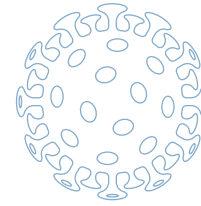


SIREN

SARS-CoV2 Immunity & Reinfection Evaluation



An URGENT national study to answer key questions about COVID-19:

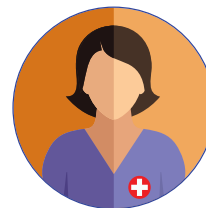
Does previous exposure to COVID-19 prevent future infections?
The study will also investigate vaccine effectiveness.

Can you help?

Are you a patient facing staff member working in a healthcare organisation?

All staff who work in areas where patients are present are welcome to participate regardless of whether you have previously had COVID-19.

Whether you are a pharmacist, nurse, porter, doctor, cleaner or in an administrative role, we need YOU to be part of the SIREN study.



If you are interested in participating and want to find out more, please contact your organisation's Research Team today.

email: